

# ESG

## Liverpool Bay Carbon Capture and Storage Pipeline Project



**Delivering the future of energy,  
powered by social purpose**

[Unitedinfrastructure.com](https://unitedinfrastructure.com)

Together we achieve more



# ESG – The **Golden Thread**

Our value extends far beyond delivering excellent service. It's not just about what we achieve, but **how** we achieve it. The greater the positive social and societal impact we create, the more meaningful and lasting our contribution becomes—for everyone.



**We are building a more sustainable and connected future**

- **Clear direction** of travel and targets, aligning and collaborating
- **Understood as** essential to long term performance
- **Visible leadership commitment** and resources to deliver
- **Collaboration, engagement and delivering together**
- **Consistent** and powerful narrative, will share our journey
- **Evidenced by** rigorous data sets, automated as much as possible

# Our ESG Framework



## Group wide ESG strategy

- Positive Lasting Legacy / Sustainability / Governance
- Aligning to B-Corp principles
- Investing in systems and data
- Host of accreditations and memberships / partnerships



## United Infrastructure ESG Framework

- Protect our planet
- Enrich lives
- Trusted partner



Watch Video – [Click Here](#)



## United Infrastructure ESG Plan – Liverpool Bay Carbon Capture and Storage Pipeline Project



# TOMS – Measurement and Reporting

- TOMS – nationally recognised way of reporting on ESG
- Within this sits 5 themes, 21 outcomes, 54 main measures
- All of which can be benchmarked externally, nationally and across industries (PPN06/20 and PPN06/21)
- Aligns to UN Sustainable Development Goals
- United Infrastructure is using it across the pillar





# TOMS – Measurement and Reporting



Jobs



Growth



Social



Environment



Innovation



## Jobs

Promote Local Skills and Employment



## Growth

Supporting Growth of Responsible Regional Business



## Social

Healthier, Safer and more Resilient Communities



## Environment

De-carbonizing and Safeguarding our World



## Innovation

Promoting Social Innovation

- More people in employment
- More opportunities for disadvantaged people

- More opportunities for local MSMEs and VCSEs
- Improved staff wellbeing and mental health
- Reducing inequalities

- Crime is reduced
- Creating a healthier community






- Carbon emissions are reduced
- Air pollution is reduced
- Safeguarding the natural environment

- Social innovation x4 areas – employment, supply chain, communities, environment

- Improved skills for local people
- Improved employability of young people
- Ethical procurement is promoted
- Cyber security risks are reduced
- Social value is embedded in the supply chain
- Vulnerable people are helped to live independently
- More working with the community
- Resource efficiency and circular economy solutions are promoted
- Sustainable procurement is promoted

# TOMS – The System

## Example application of the National TOMs

THEME	OUTCOME	MEASURE	UNIT	VALUE
 <b>JOBS:</b> Local skills and employment	More opportunities for disadvantaged people			
	More opportunities for local SMEs and VCSEs	No. ex-offenders employed	No. people FTE	£24,269.00/pp
 <b>GROWTH:</b> Responsible and local business	More working with the community	Spend in local supply chain	£ spent	Local Spend
	Reducing inequalities	No. voluntary hours	No. hrs	£16.93/hr
 <b>SOCIAL:</b> Healthier, safer & more resilient communities	Vulnerable people are helped to live independently	Tonnes CO <sub>2</sub> e reduced	tCO <sub>2</sub> e	£244.63/tCO <sub>2</sub> e
	Carbon emissions are reduced			
 <b>ENVIRONMENT:</b> Decarbonising and safeguarding our world	Air pollution is reduced			
	Safeguarding the natural environment			
 <b>INNOVATION:</b> Social innovation				
TOTAL SOCIAL VALUE = SUM (MEASURES x VALUE)				

# Vision **for** Liverpool Bay

Carbon Capture and Storage Pipeline Project



Protect Our Planet: Sustainable and nature positive in everything we do

Enrich Lives: Reach and support those who need it most

Trusted Partner: Leave it better

Targeted  
community  
interventions

Local and  
targeted  
employment

Boosting  
businesses  
and  
communities

Sustainable  
and nature  
positive sites



Educate and Inspire



Collaborate for impact

(wider collaboration, supply chain partners, community groups, schools and colleges)



Understood the pipeline route and proximity to local villages, schools, colleges, areas / buildings of interest – mapped it out on google earth



Completed a Community Needs Assessment to understand the make-up of the communities identified as being impacted/near to the pipeline



Identify which areas require the most support for us to focus our efforts

Lower Super Output Area (LSOA)

Key  
- Green: Above average, No action  
- Amber: Below average, Monitor  
- Red: Significantly below average, Action needed

	Queens-ferry	Shotton Higher 2	Aston 2	Aston 1	Ewloe 3	Mold Broncoes 1	Flint Coleshill 3	Brynford	Trelawn d Gwaen	Gronant	Ffynnon groyw
Area of focus 1	Sandycroft, Deeside	Shotton	Aston, Deeside	Hawarden, Deeside	Ewloe, Deeside	Mold	Flint	Pentre Halkyn & Babel	Trelawn, Holyw	Gwespyr, Holyw	Talacre
Area of focus 2											
Overall Index of Multiple Deprivation (IMD) Rank	48	12	56	55	81	39	44	43	32	16	11
IMD Income	46	22	70	25	83	33	36	61	35	14	17
IMD Education	46	6	44	51	84	30	47	57	42	28	18
IMD Employment	46	33	2	48	32	90	39	37	50	36	9
IMD Community Safety	46	10	4	61	38	47	37	54	53	57	12
IMD Health	46	14	7	48	40	88	64	42	52	51	15
IMD Housing	46	2	9	61	54	84	38	63	49	46	27
IMD Physical Environment	46	3	13	30	35	14	21	49	84	92	47
IMD Access to Services	46	32	20	37	85	75	46	21	14	3	7



High level understanding of what design solutions would have an impact according to the areas these communities scored low on







## England:

- **Area Focus 1:** From Yellow Pipeline Meterage Point 0 (Ince) to Meterage Point 1000 (Elton), identified due to significantly **higher unemployment (12.1% vs. 7.6% national average)**, along with **higher long-term sickness, claimant rates, and no qualifications**. The population, as per 2011 Census data, is over 6,000.
- **Area Focus 2:** From Yellow Pipeline Meterage Points 9000 to 11000 (Mollington to Upton), while 2011 data **shows no specific concerns, its close proximity to St Oswald's C E Aided Primary School** (approximately 0.12 km) makes it noteworthy. The population, as per 2011 Census data, is around 8,000.

## Wales:

- **Area Focus 3:** From Yellow Pipeline Meterage points 18000 to 23000 (Sandycroft (Shotton)), identified due to high deprivation, **with Sandycroft one of the lowest rankings out of 92. Key issues include income, education, employment, community safety, health, and housing**. The combined population, as per 2011 Census data, is over 16,000.



## Beacon Schools



## Foodbanks



## Veterans / Prisoners



## Impact and Circular Economy

### Area 1

**Primary:** Elton Primary School

**Secondary:** Ellesmere Port Church of England College



### Area 2

**Primary:** St Oswald's C of E Primary School

**Secondary:** Blacon High School



### Area 3

**Primary:** Sandycroft C.P. School & Hawarden Primary School

**Secondary:** Hawarden High School



### Area 1

Elton Community Hub and Pantry



ELTON Community Centre

### Area 2

West Cheshire Foodbank



### Area 3

Sandycroft Community Hub and Pantry



## Regional partnerships



## Conservation







## Area 1

**Primary:** Elton Primary School



**Secondary:** Ellesmere Port Church of England College



## Area 2

**Primary:** St Oswald's CofE Primary School



**Secondary:** Blacon High School



## Area 3

**Primary:** Sandycroft C.P. School & Hawarden Primary School



**Secondary:** Hawarden High School



# Educational Programme

Beacon Schools –

An **educational programme** that offers interactive experiences on green skills, net zero, and CCUS for primary, secondary, and further education levels. It includes eco-challenges, hands-on workshops, and Dragons' Den-style competitions / filming competition (Netflix judge).

A **central resource hub** will provide teaching materials and expert support, promoting collaboration with the curriculum and inspiring careers in green technologies.







# Foodbanks

## Area 1

Elton Community Hub and Pantry



ELTON Community Centre

## Area 2

West Cheshire Foodbank



## Area 3

Sandycroft Community Hub and Pantry



## Foodbanks

Work with them to ensure our support is valuable

Logistical support –

Teams in vehicles to transport food regularly, whether that's to distribution hubs, vulnerable people in their homes, community areas. We have vehicles and labour we will free up.

Marketing support –

Help them become more self-sustainable, with set up of online presence, recurring payments system, marketing materials for events and reach into other local businesses.

Nutritional and community wellbeing –

Bring elite sports experts to share and educate with residents on nutrition, hydration, sleep and general physical and mental wellbeing. Mike Phelan and other elite sports specialists to support.



# Veterans / Prisoners

## Regional partnerships



## Veterans/Prisoners

Higher areas of deprivation tend to have larger portion of veterans and ex-prisoners

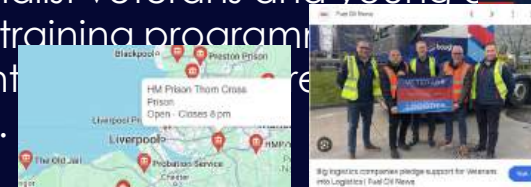
### Veterans -

Targeted employment programmes and partnership with Walking With The Wounded to support mental health. Seek any specific support hubs in focus areas, such as Royal British Legion in Sandywell. Offer volunteering expert time, profile raising and general volunteering programmes.

Ensure any veteran focused businesses are supported with such as RBLI signage

### Prisoners –

Work with HMP Thorncross, specialist veterans and young institute for skills and education training programme. Potential avenues to recruitment. Prison specific social enterprises.



# Impact and Circular Economy



## Conservation



## Impact and circular economy

Marine Conservation Society (MCS) – Support beach cleans to help MCS in their efforts to achieve and uphold Blue Flag status and enhance beach clean activities. Will do this by supplying litter picking equipment and providing volunteers for beach clean events. Also, aid in data collection and environmental monitoring necessary for Blue Flag status.

Refurb Flintshire – Work with this charity collecting redundant materials to keep them in use as long as possible. Instead of recycling we will gift it for use in the community where possible. Partner with similar organisations across our focus areas.

Sustainable and nature positive sites – Operationally go green where feasible and conduct thorough assessments on site, with action plans put in place for sustainability and nature positive practices.

Forests / wildlife hubs

Use volunteering and partnerships to support the creation of green

spaces. Partnerships with community forests, social enterprises, local

community groups.

Together we achieve

more



## Local employment

### Targeted

Focus across our three areas and work with local charities and organisations.

Use our Armed Forces Covenant and existing employment links to target veteran recruitment in our focus areas

Prisoner targeted recruitment?

Will employ circa 400 people at peak in H1 2026, in varied roles

We will employ local apprentices – targeted 6 engineering roles 6 engineering roles: 4 mechanical engineers and 2 civil:

- 3 Undergrad placements
- 3 Graduate roles

## Boosting businesses and communities

### Community Connect

United Living Community Connect is a digital platform designed to link local Voluntary, Community and Social Enterprises (VCSE) with businesses and grants. The platform will function as a funds and grants hub allowing organisations to detail their specific needs while enabling businesses to offer targeted support. This community-driven initiative aims to respect local knowledge, avoid duplication of efforts, and enhance coordination. By facilitating effective collaboration, the platform will support the circular economy, strengthen community resilience, and ensure that resources are used where they are most needed.

#### How:

The concept draws inspiration from the "Together for Good" platform within the Sellafeld PPP Framework.

### Dependant on funding commitments



# £3m Social Value Generated

Indicative



## Apprenticeships

468 weeks of apprenticeships  
£118K



## Career support Sessions

120 (hours x attendees) of career support  
£2K



## Employing Locally

100 Full Time Equivalent jobs created in the definition of local  
£2.8m



## Volunteer Hours

1000 hours of volunteering for VCSEs and local community groups  
£17K



## Biodiversity and nature positive impacts

Investment in projects and expert time  
£5K



## Community Support

Invested in local community projects  
£xxK



## Charity Support

Donated to local VCSEs, inc in-kind  
£5K



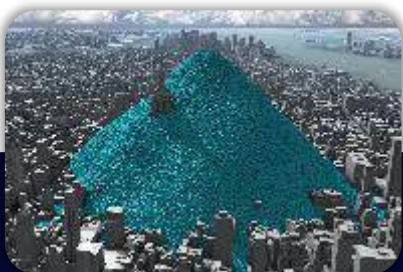
## Expert Volunteering

200 hours of expert volunteering for VCSEs and MSMEs  
£20K



## Training Opportunities

10 weeks of training opportunities provided  
£3K



## Carbon tonnes saved

tCO2e saved through innovation (100)  
£25K



Walk to launch

Led by our future  
for the future of  
energy



## Young persons network

- Three days along the pipeline route
- Spring time 2026
- Led by the Young Persons Network
- Collaborative walk
- Raising funds for local community
- Targeted community intervention along the way
- Set stop off points for education and inspiring
- Press and media coverage

